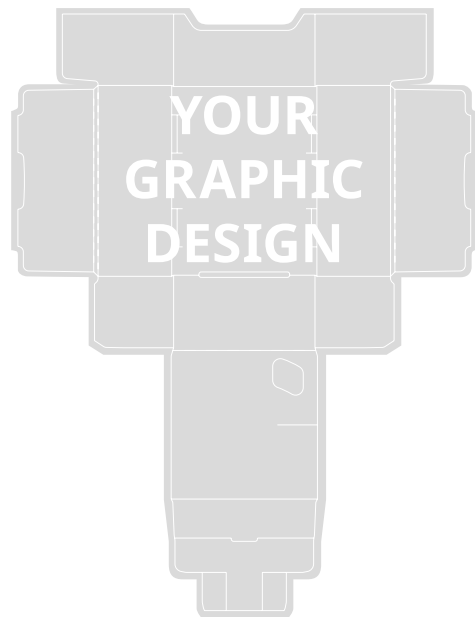


# Stühmer

PREMIUM QUALITY CHOCOLATES

PRIVATE LABEL &  
CO-BRANDING





## WHITE CHOCOLATE BAR WITH CRUNCHIE PISTACIO FILLING

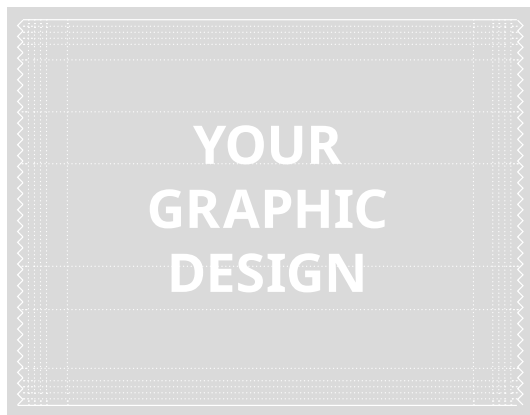
32 g

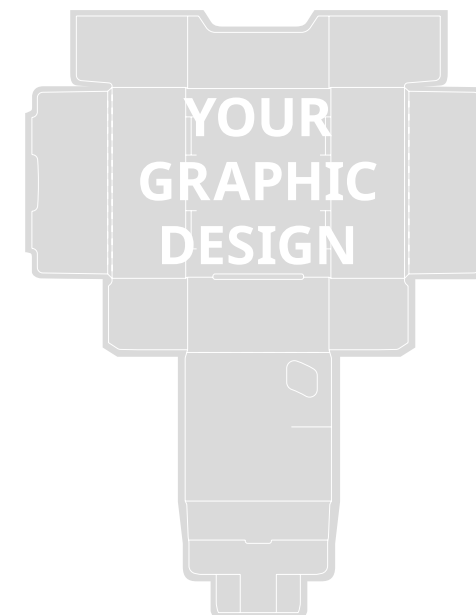
### Packaging dimensions

Flow pack: 130mm x 40mm x 15mm

Box: 128mm x 174mm x 60mm

Art No.: 9789





## MILK CHOCOLATE BAR WITH CRUNCHIE PECAN FILLING

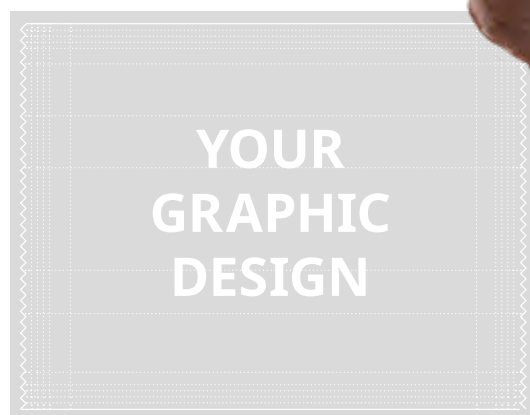
37 g

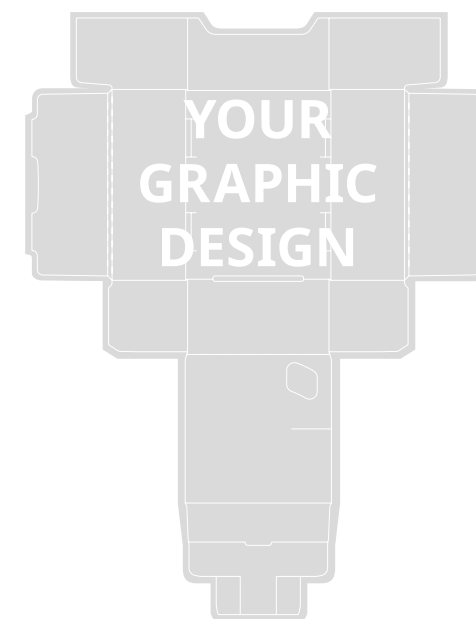
### Packaging dimensions

Flow pack: 130mm x 40mm x 15mm

Box: 128mm x 174mm x 60mm

Art No.: 9793





## CRUNCHY MILKY- STRAWBERRY BAR

30 g

### Packaging dimensions

Flow pack: 130mm x 40mm x 15mm

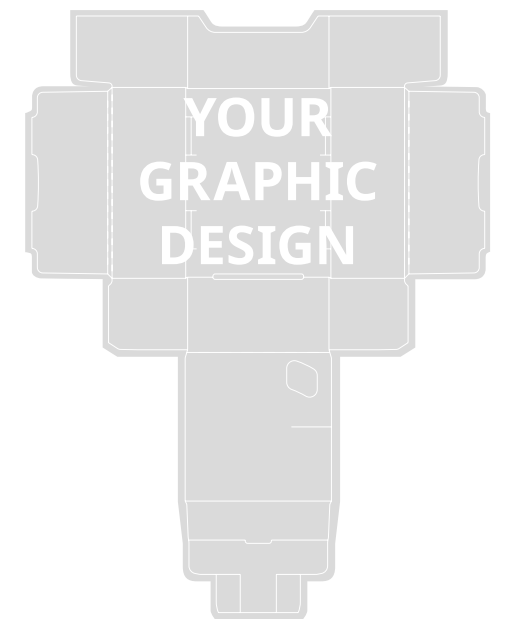
Box: 128mm x 174mm x 60mm

Art No.: 9797



YOUR  
GRAPHIC  
DESIGN





## CRUNCHY MILKY BAR

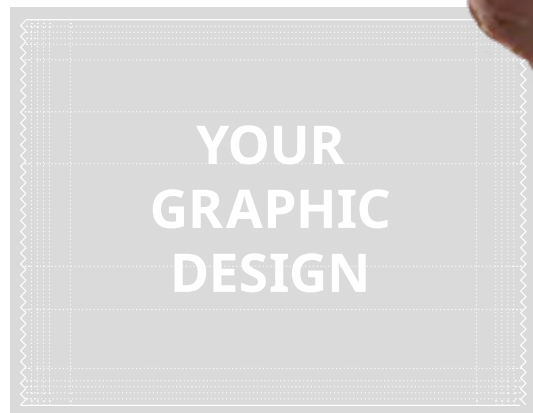
30 g

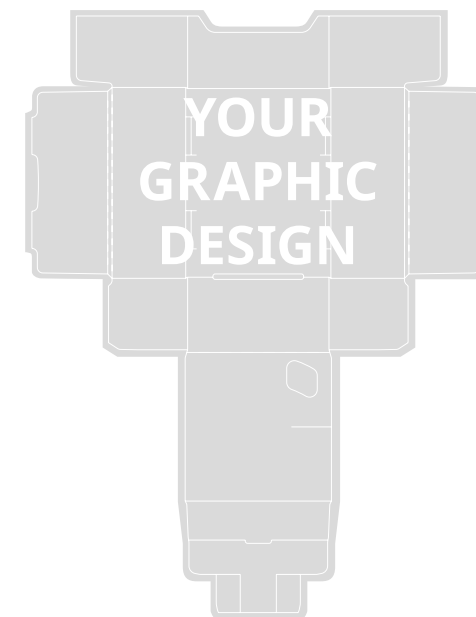
### Packaging dimensions

Flow pack: 130mm x 40mm x 15mm

Box: 128mm x 174mm x 60mm

Art No.: 9795





## 2 CHOCOLATE BARS WITH DOUBLE CARAMEL FILLING

52 g

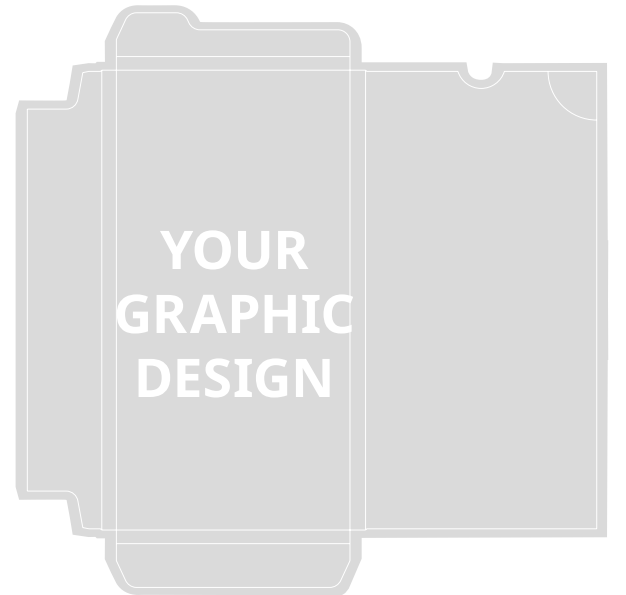
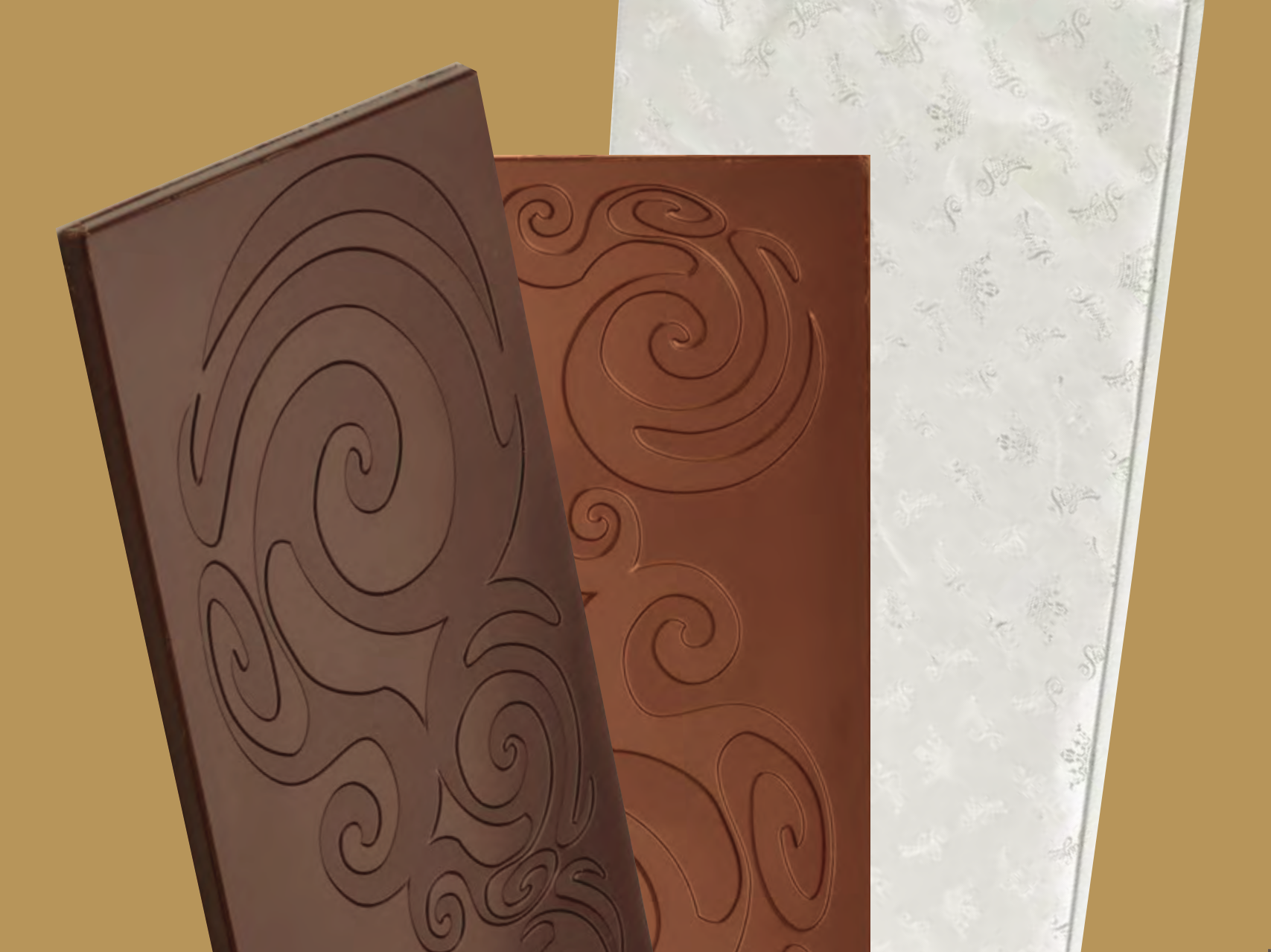
### Packaging dimensions

Flow pack: 180mm x 40mm x 20mm



YOUR  
GRAPHIC  
DESIGN





**FRIEDRICH STÜHMER PREMIUM CHOCOLATE TABLETS**

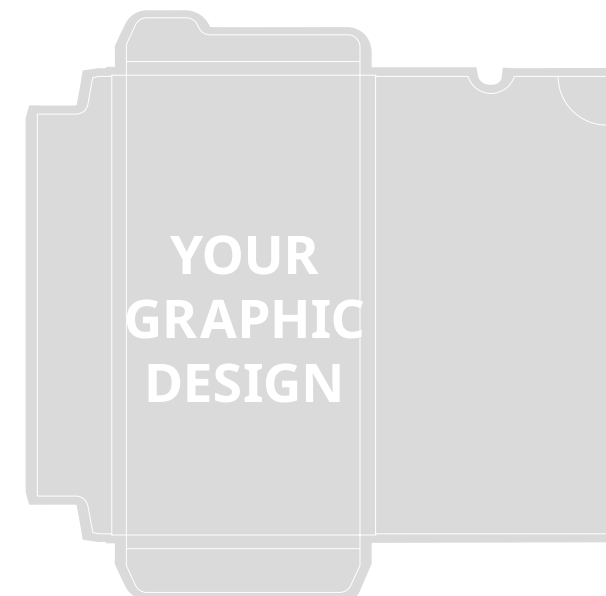
Dark and milk chocolate tablets with high cocoa solidity

75 g

Packaging dimensions: 95mm x 190mm x 7mm

Art No.: 9825 Sao Palme 75%, 9819 Abinao 85%, 9821 Bolivia 45%, 9823 Bolivia 68%





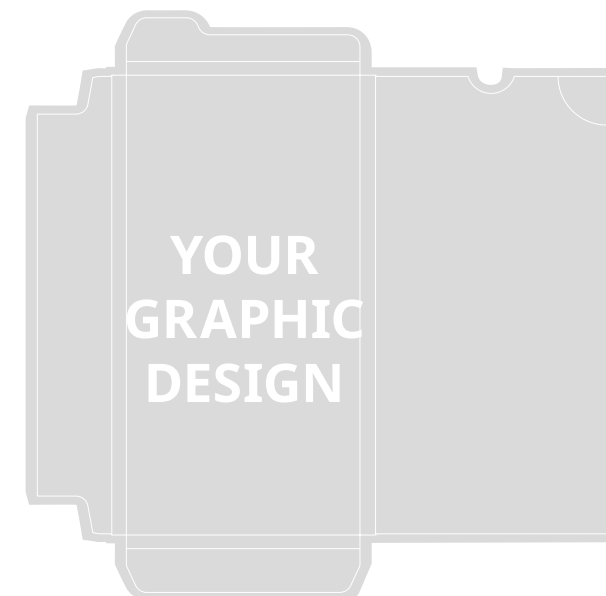
## STÜHMER MILK CHOCOLATE TABLETS

90 g

Packaging dimensions: 95mm x 190mm x 7mm

Art No.: 9503





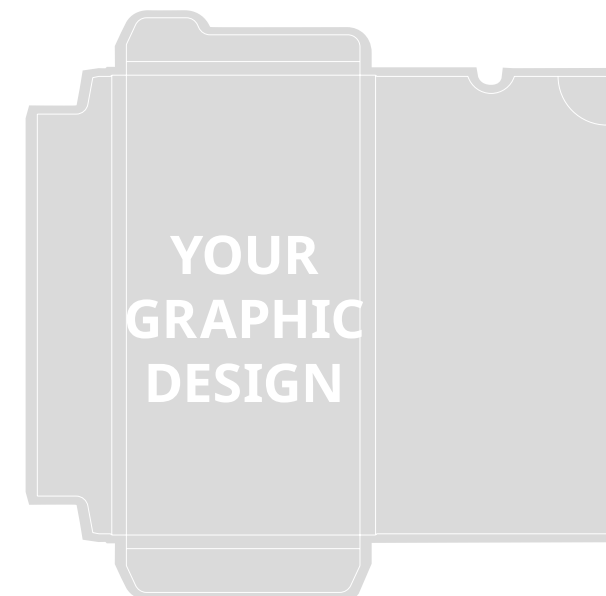
## STÜHMER DARK CHOCOLATE TABLETS

90 g

Packaging dimensions: 95mm x 190mm x 7mm

Art No.: 9505



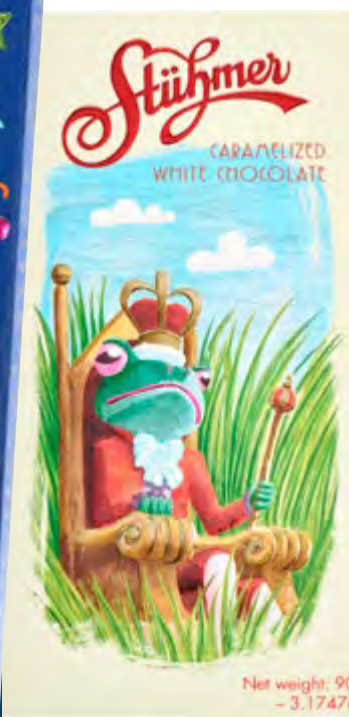


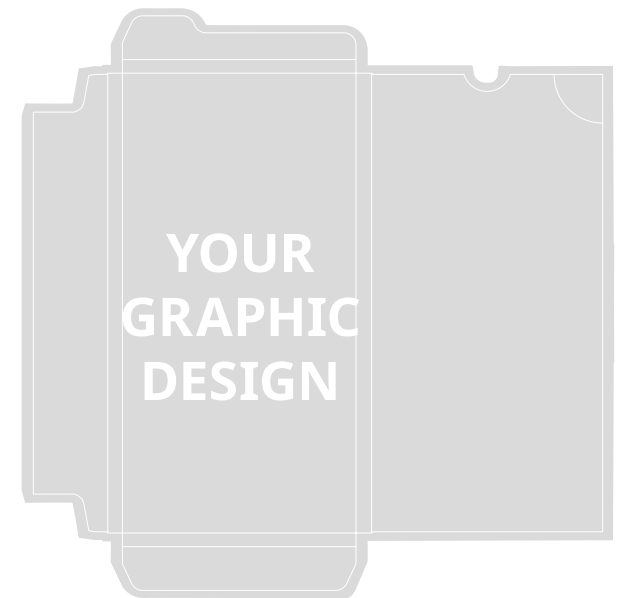
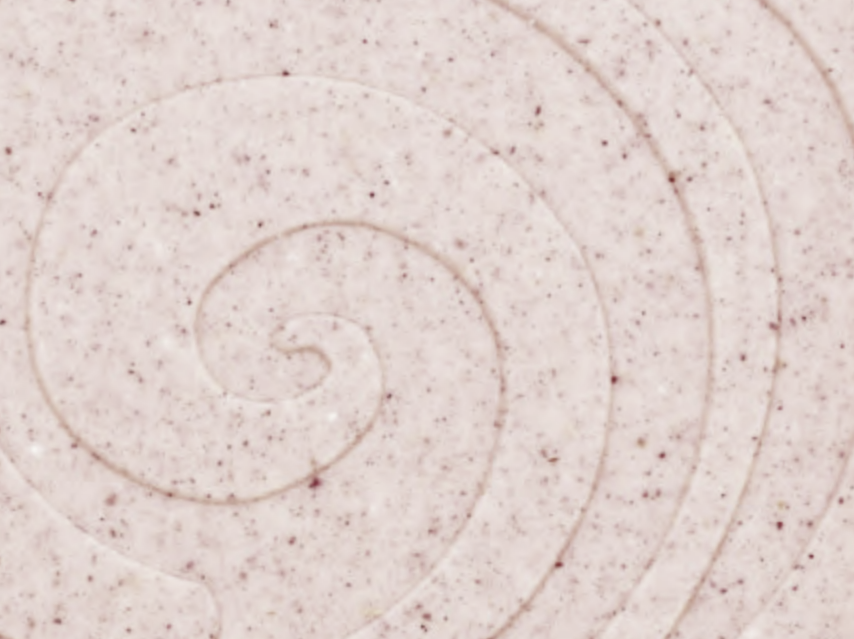
## STÜHMER CARAMELIZED WHITE CHOCOLATE TABLETS

90 g

Packaging dimensions: 95mm x 190mm x 7mm

Art No.: 9507





## DARK CHOCOLATE TABLET WITH CANDIED ORANGE PEEL

Art.No.: 9627

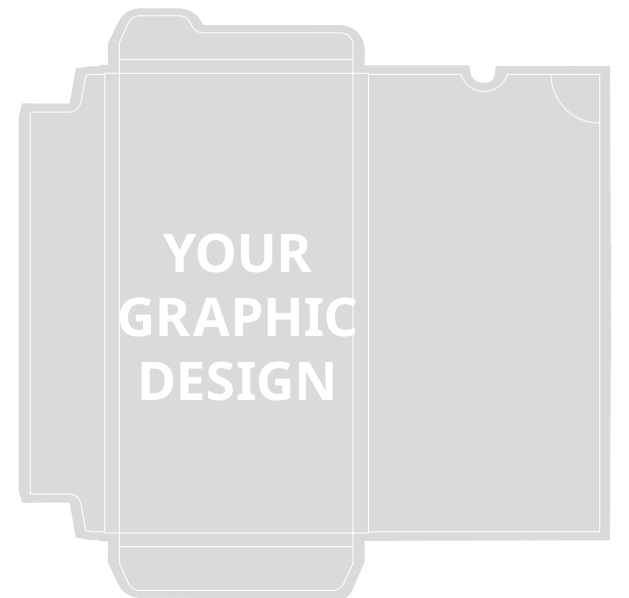
## WHITE CHOCOLATE WITH BLACKBERRIES

Art.No.: 5876-1

90 g

Packaging dimensions: 95mm x 190mm x 7mm





## CHOCOLATE TABLETS WITH NO ADDED SUGAR

90 g

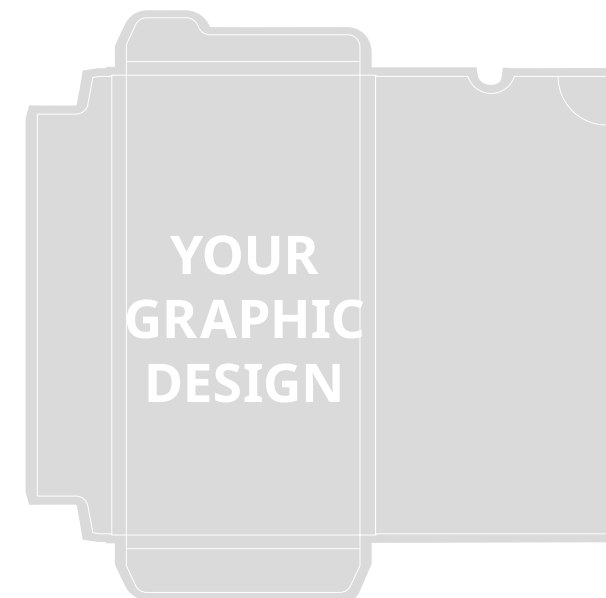
Packaging dimensions: 95mm x 190mm x 7mm

Art No.:  
9651 milk  
9653 dark





**FOR  
CO-BRANDING  
ONLY!**



## CHOCOLATE TABLETS WITH NO ADDED SUGAR

90 g

Packaging dimensions: 83mm x 182mm x 10mm

Art.No.: 9718 Pistachio, 9310 Orange, 9647 Sour cherry, 5964 Hazelnut





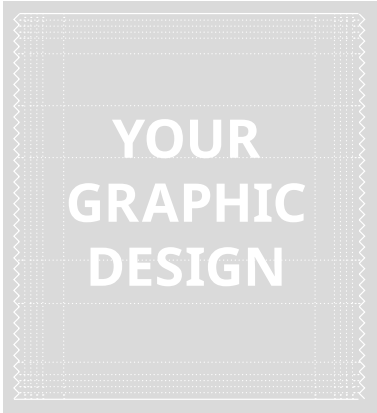
**FRUIT DESSERTS**  
100 g

**Packaging dimensions**  
Bag: 140mm x 200mm x 70mm

Almond marzipan with  
sour cherry and chocolate  
cream, covered with dark  
chocolate

Art.No.: 9678

Plum-chocolate cream,  
covered with dark chocolate  
Art.No.: 9676





YOUR  
GRAPHIC  
DESIGN



YOUR  
GRAPHIC  
DESIGN

# STÜHMER MOMENT DESSERT SELECTION IN 5 FLAVORS

100 g

**Packaging dimensions**  
Flow pack: 100mm x 25mm x 15mm  
Bag: 140mm x 200mm x 70mm

Art.No.: 9841

- Milk chocolate with salted caramel cream filling
- Dark chocolate with chocolate cream filling
- Caramelized white chocolate with almond brittle nougat filling
- Milk and white chocolate with apple caramel cream filling
- Milk chocolate with milk cream filling

# STÜHMER WHITE CHOCOLATE WITH PISTACHIO CREAM FILLING

100 g

Art.No.: 9843





## STÜHMER MOMENT DESSERT SELECTION „HEART”

100 g

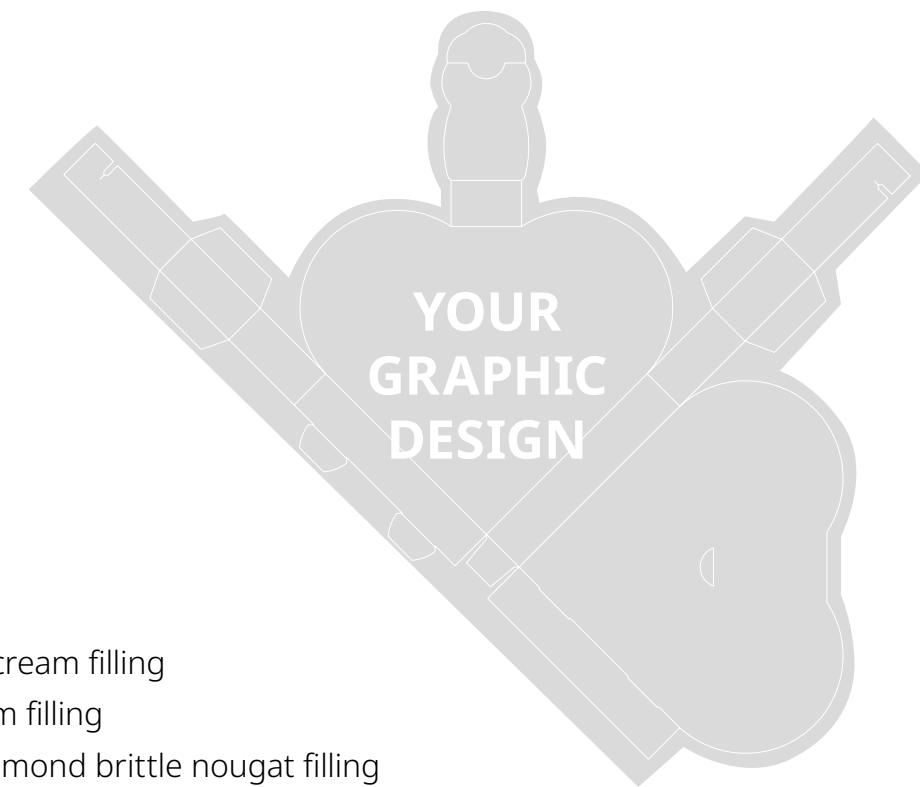
### Packaging dimensions

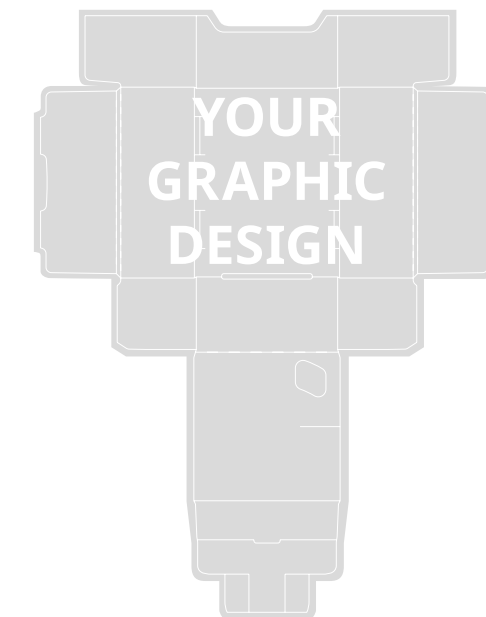
Flow pack: 100mm x 25mm x 15mm

Box: 194mm x 169mm x 24mm

Art.No.: 9837

- Milk chocolate with salted caramel cream filling
- Dark chocolate with chocolate cream filling
- Caramelized white chocolate with almond brittle nougat filling
- Milk and white chocolate with apple caramel cream filling
- Milk chocolate with milk cream filling





## STÜHMER MOMENT PARTY BOX DESSERT SELECTION IN 5 FLAVORS

500 g

### Packaging dimensions

Flow pack: 100mm x 25mm x 15mm

Box: 127mm x 83mm x 150mm

Art.No.: 9827

- Milk chocolate with salted caramel cream filling
- Dark chocolate with chocolate cream filling
- Caramelized white chocolate with almond brittle nougat filling
- Milk and white chocolate with apple caramel cream filling
- Milk chocolate with milk cream filling

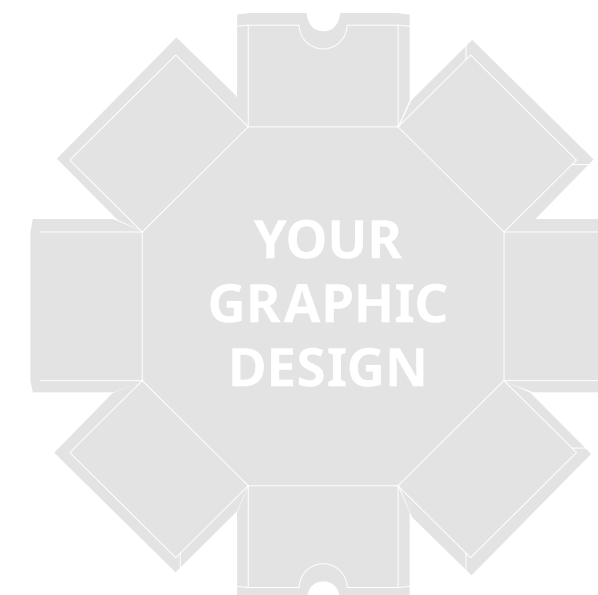
## STÜHMER WHITE PARTY BOX CHOCOLATE WITH PISTACHIO CREAM FILLING

500 g

Art.No.: 9828



YOUR  
GRAPHIC  
DESIGN



## STÜHMER PRALINE SELECTION WITH HAZELNUT AND MILK CHOCOLATE CREAM

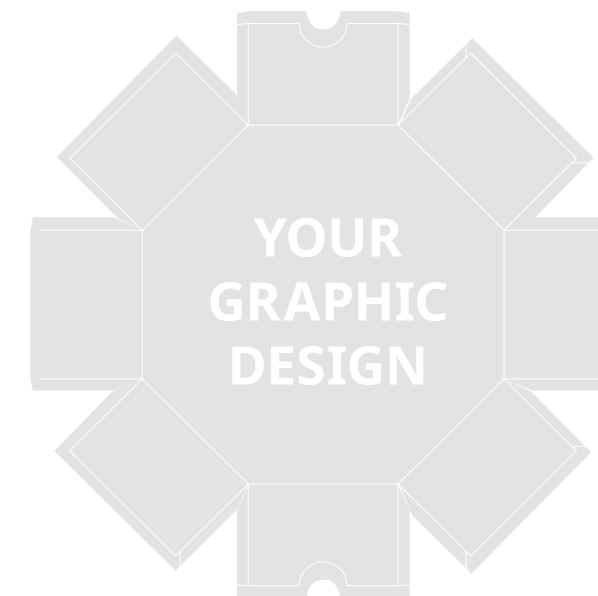
66 g

### Packaging dimensions

Box: 100mm x 100mm x 30mm

Art.No.: 9704





## CHERRY MARZIPAN

80 g

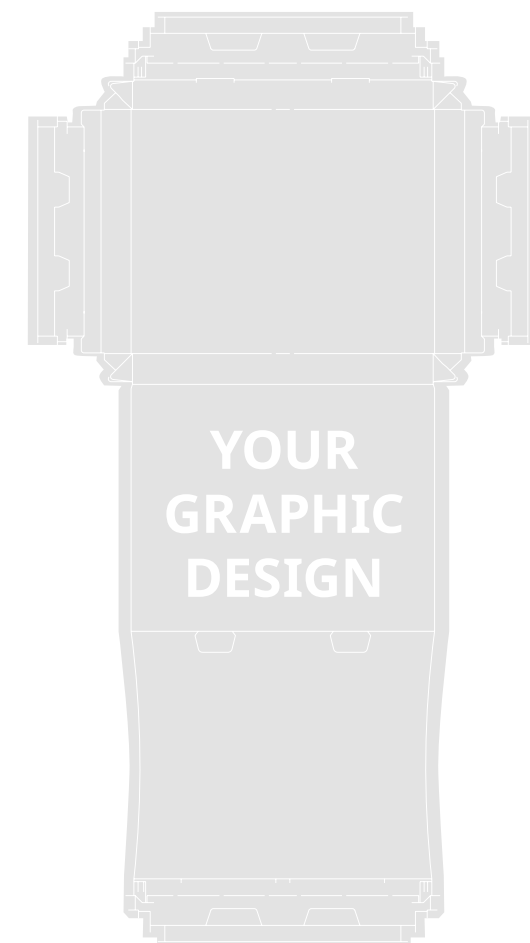
### Packaging dimensions

Box: 100mm x 100mm x 30mm

Art.No.: 9710

Almond marzipan with sour cherries  
and dried cherries, covered with dark  
chocolate





## 4 TYPES FILLED BONBONS

130 g

### Packaging dimensions

Box: 220mm x 180mm x 25mm

Art.No.: 9735

White chocolate filled with coffee cream;  
Milk chocolate filled with salted caramel  
cream; Dark chocolate filled with chocolate  
cream; Caramelized white chocolate filled  
with almond croquant nougat

FOR  
CO-BRANDING  
ONLY!

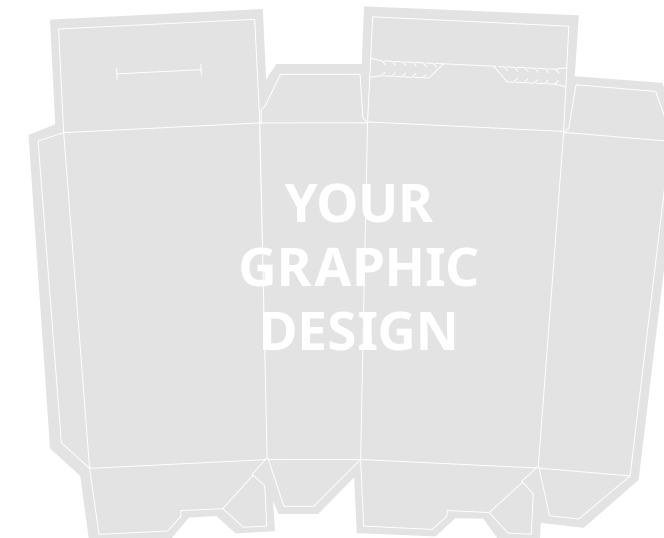




THE FILLING WAS  
MADE FROM FRUITS



YOUR  
GRAPHIC  
DESIGN



## FRUIT PRALINE SELECTION

156 g

### Packaging dimensions

Box: 105mm x 183mm x 60mm

Art.No.: 9568

Strawberry, blackcurrant, sour  
cherry and raspberry jelly covered  
with marzipan, white and dark  
chocolate

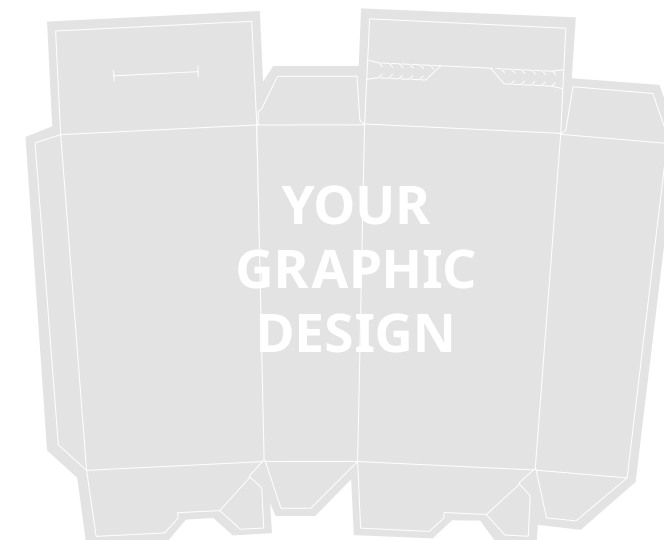




THE FILLING WAS  
MADE FROM FRUITS



YOUR  
GRAPHIC  
DESIGN



## MARZIPAN SELECTION

170 g

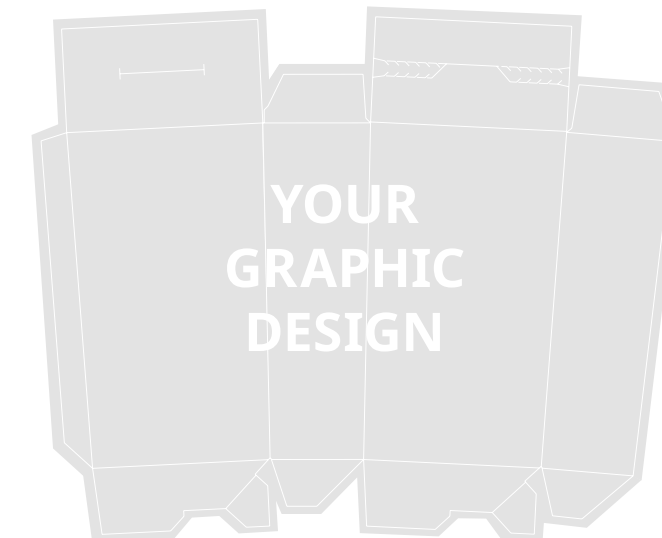
### Packaging dimensions

Box: 105mm x 183mm x 60mm

Art.No.: 9568

Marzipan with sour cherry cream, covered with dark- and milk chocolate; Marzipan with caramel cream, covered with milk chocolate; Marzipan with pistachio cream, covered with white chocolate; Hazelnut-almond brittle with orange cream, covered with dark- and milk chocolate





## STÜHMER ORANGE BLOSSOM

200 g

### Packaging dimensions

Box: 105mm x 183mm x 60mm

Art.No.: 9065

Candied orange with chocolate cream

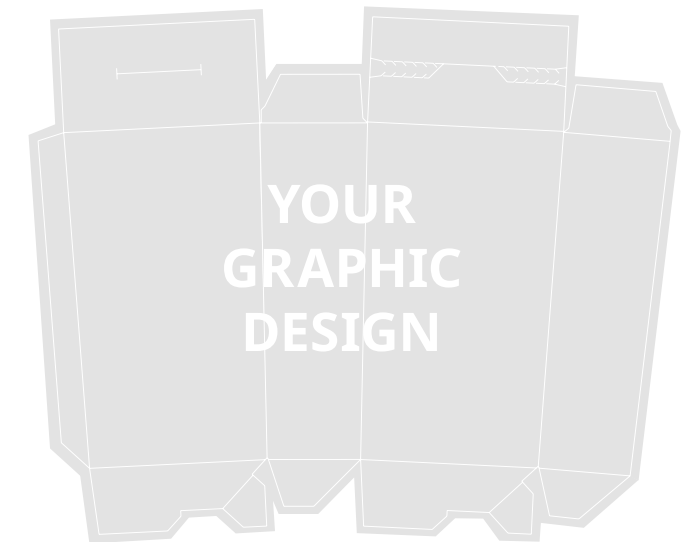




THE FILLING WAS  
MADE FROM FRUITS



YOUR  
GRAPHIC  
DESIGN



## STÜHMER „SZILVÁS BETYÁR”

200 g

**Packaging dimensions**  
Box: 105mm x 183mm x 60mm

Art.No.: 9065

Dried plum with cream and dark chocolate cover



# STÜHMER CONTACT

## TAMÁS TÖRÖK

Head of Export



**M:** +36 70 559 35 15

**E:** [tamas.torok@stuhmer.hu](mailto:tamas.torok@stuhmer.hu)

**A:** Stühmer Kft., H-1134 Budapest, Átrium Park,  
Váci út 45., „C” épület, 7. emelet

**Factory:** H-3397, Maklár, Stühmer Frigyes u.1

**W:** [www.export.stuhmer.hu](http://www.export.stuhmer.hu)



### CERTIFICATE

Certificate No.: 161670-2014-AIFS-BUD-ACCREDIA	Certificate Issue date: 23.09.2025	Next Recertification audit to be performed within the time period between: 07.06.2026 and 16.08.2026 (announced audit) 12.04.2026 and 16.08.2026 (unannounced audit)
Audit date: 05.08.2025	Certificate Expiry Date: 26.09.2026	
	Date and place: 24.09.2025, Vimercate	


Herewith the certification body DNV Business Assurance Italy S.r.l. being an ISO/IEC 17065 accredited certification body for IFS Certification and having signed an agreement with IFS Management GmbH, confirms that the processing activities of

**Stühmer Kft**  
**Stühmer Frigyes u 1., 3397 Maklár, Hungary**  
COID: 45260 - GS1 GLN(s): 5990503820005  
Legal authorisation number: 09 1 154

for the audit scope:  
**Production (dosing, heat treatment, mixing, stretching, cutting, molding, coating or filling) and packaging in BOPP foil pouches, metalized foil, paper-coated aluminum foil, plastic blisters with paper pads, aluminum foil and paper of molded and coated chocolate (unstuffed, filled, solid, hollow, stratified) and marzipan products.**

additional information:  
Besides own production, the company has partly outsourced processes  
The company has own broker activities which are not certified, according to IFS or another GFSI recognised standard.  
**Product scopes: 6 Grain products, cereals, industrial bakery and pastry, confectionary, snacks**  
**Technology scopes: D, E, F**

meet the requirements set out in the  
**IFS Food Version 8, April 2023**  
and other associated normative documents  
Passed at Higher Level with a score of 97.83 %  
Date of the last unannounced audit (last day of the audit):17.05.2023

For the Certification Body: Sabrina Bianchini:  
  
Address of the Certification Body: DNV Business Assurance Italy S.r.l., Via Energy Park, 14, 20871 Vimercate (MB), Italy  
Lack of fulfilment of conditions as set out in the Certification Agreement may render this Certificate invalid.  
Any changes in the product shall immediately be reported to DNV Business Assurance Italy S.r.l. in order to verify whether this certificate remains valid.



