

Stühmer

PREMIUM QUALITY
CHOCOLATES

2026



STÜHMER'S HISTORY MILESTONES

1868

FREDRICH STÜHMER
ESTABLISHED THE STÜHMER
CHOCOLATE FACTORY



1920-46

63 STORES AROUND THE WORLD
INCLUDING PARIS AND ABBAZIA



2014

OPENING THE
NEW FACTORY SHOP
IN MAKLÁR



2014

OPENING THE
NEW FACTORY BUILDING
IN MAKLÁR



2008

START THE
PRODUCTION
IN NOVAJ



2006

100% HUNGARIAN
OWNERSHIP OF
STÜHMER BRAND

2015

STÜHMER CONFECTIONERY
IS PRESENT IN MORE
THAN 19 COUNTRIES



2016-17

TEMPERATURE CONTROLLED
WAREHOUSE BUILDING WITH 2000 EUR
PALLETS STORAGE CAPACITY



2017

OPENING THE
STÜHMER CREMERIA
IN MAKLÁR



2018

BRAND NEW 3RD KNOBEL SWISS
FULL AUTOMATA PRODUCTION
LINE PURCHASING AND PICK &
PLACE ROBOT TECHNOLOGY
INTEGRATION IN PRODUCTION



2022

WAREHOUSE EXTENSION



2021

PREPARE OF OWN RETAIL
SHOP EXPANSION
PREPARE OF FRANCHISE SYSTEM



2020

NEW PREMIUM PRODUCT
LINE DEVELOPMENT



2018-19

PRODUCTION CAPACITY DEVELOPING
AND NEW KITCHEN AREA BUILDING
(AASTED EXTRUDER + HANSEL SIEDOMAT
AUTOMATA COOKING MACHINE
+ ULTRASONIC CUTTING MACHINE



2022-25

NEW OWN SHOPS



2026

NEW ONE SHOT
PRODUCTION LINE



MAJOR
PARTNERS OF
STÜHMER



STÜHMER CONFECTIONERY & STORE





CHOCOLATE BAR WITH CRUNCHY PISTACHIO FILLING

32 G

Dimensions: 130mm x 40mm x 15mm
Pcs/carton: 20
Shelf life: 10 months
Article No.: 9789





CHOCOLATE BAR WITH CRUNCHY PECAN FILLING

37 G

Dimensions: 130mm x 40mm x 15mm
Pcs/carton: 20
Shelf life: 10 months
Article No.: 9793





CRUNCHY MILKY- STRAWBERRY BAR

30 G

Dimensions: 130mm x 40mm x 15mm
Pcs/carton: 20
Shelf life: 10 months
Article No.: 9797





**CRUNCHY
MILKY BAR**
30 G

Dimensions: 130mm x 40mm x 15mm
Pcs/carton: 20
Shelf life: 10 months
Article No.: 9795





ORANGE BAR

32 G

Dimensions: 130mm x 40mm x 15mm
Pcs/carton: 20
Shelf life: 7 months
Article No.: 9496





**DOUBLE
CARAMEL BAR**
52 G

Dimensions: 180mm x 40mm x 20mm
Pcs/carton: 24
Shelf life: 10 months
Article No.: 9957



FRIEDRICH STÜHMER PREMIUM CHOCOLATE TABLETS

75 G

Dark and milk chocolate tablets
with high cocoa solidity



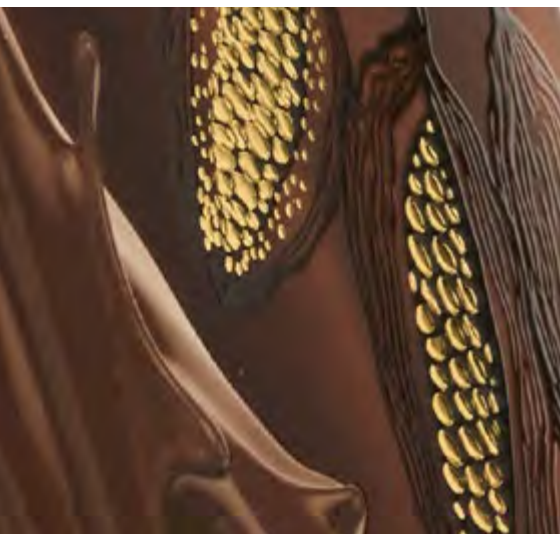
Dimensions:	95mm x 190mm x 7mm
Pcs/carton:	20
Carton/pal.:	180
Shelf life:	24 months
Article No.:	9825 Sao Palme 75%
	9819 Abinao 85%
	9821 Bolivia 45%
	9823 Bolivia 68%



CHOCOLATE TABLETS EXCLUSIVELY FOR SPAR

80 G

Dark and milk chocolate tablets. Caramelized white chocolate tablet and white chocolate tablet with strawberry.

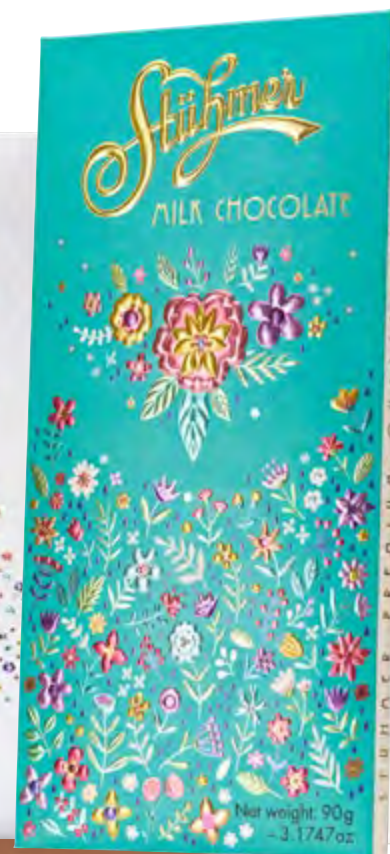
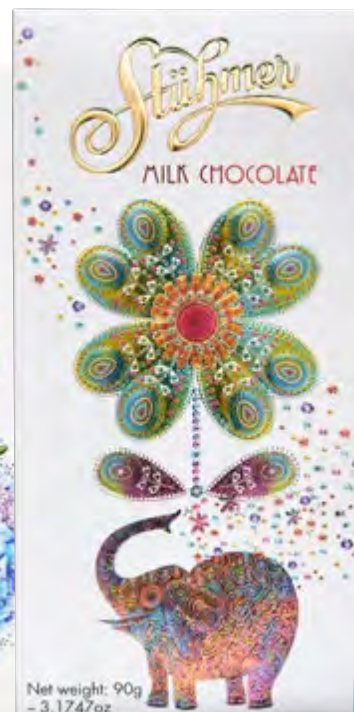


Dimensions: 000x000x000mm
Pcs/carton: 20
Carton/pal.: 180
Shelf life: 18-24 months
Article No.: 9945 Milk
9943 Dark
9941 Strawberry
9939 Caramelized white



STÜHMER MILK CHOCOLATE TABLETS

90 G

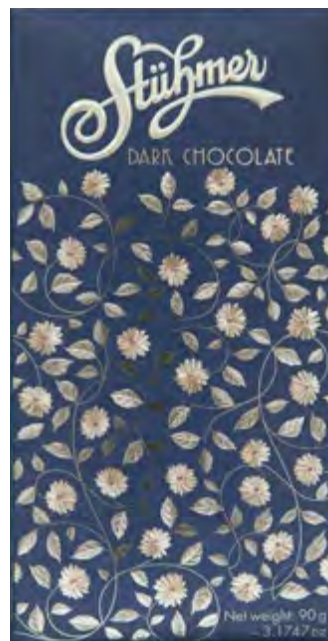


Dimensions:	95mm x 190mm x 7mm
Pcs/carton:	20
Carton/pal.:	180
Shelf life:	24 months
Article No.:	9503 Elephant
	9503 Bear
	9503 Hydrangea
	9503 Girl



STÜHMER DARK CHOCOLATE TABLETS

90 G



Dimensions:	95mm x 190mm x 7mm
Pcs/carton:	20
Carton/pal.:	180
Shelf life:	24 months
Article No.:	9505 Birds 9505 Rock 9505 Blue 9505 Kalocsa



STÜHMER CARAMELIZED WHITE CHOCOLATE TABLETS

90 G



Dimensions:	95mm x 190mm x 7mm
Pcs/carton:	20
Carton/pal.:	180
Shelf life:	18 months
Article No.:	9507 Christmas
	9507 Fairy
	9507 Happy Birthday
	9507 Cream



**DARK CHOCOLATE
TABLET WITH
CANDIED
ORANGE PEEL**

90 G



**WHITE
CHOCOLATE
TABLET WITH
BLACKBERRIES**

90 G



Dimensions: 95mm x 190mm x 7mm
Pcs/carton: 20
Carton/pal.: 180
Shelf life: 18-24 months
Article No.: 9627 Dark-Orange
5876-1 White-Blackberry



STÜHMER WHITE CHOCOLATE TABLETS WITH STRAWBERRIES

90 G



Dimensions: 95mm x 190mm x 7mm
Pcs/carton: 20
Carton/pal.: 180
Shelf life: 18 months
Article No.: 9559 Flowers
9559 Girl

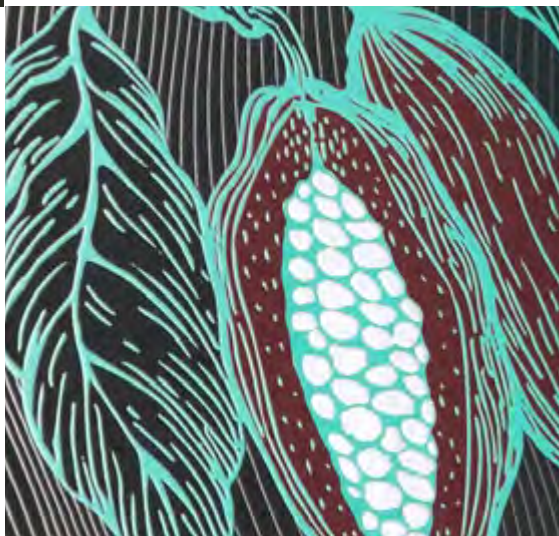


STÜHMER ZERO TABLETS NO ADDED SUGAR

90 G



Dimensions: 95mm x 190mm x 7mm
Pcs/carton: 20
Carton/pal.: 180
Shelf life: 24 months
Article No.: 9651 Milk
9653 Dark



STÜHMER ZERO FILLED CHOCOLATE TABLETS NO ADDED SUGAR

100 G



Dimensions:	83mm x 182mm x 10mm	
Pcs/carton:	10	
Carton/pal.:	300	
Shelf life:	9-12 months	
Article No.:	9718	Pistachio
	9310	Orange
	9647	Sour cherry
	5964	Hazelnut



FRUIT DESSERTS

100 G



- Plum-chocolate cream, covered with dark chocolate
- Almond marzipan with sour cherry and chocolate cream, covered with dark chocolate

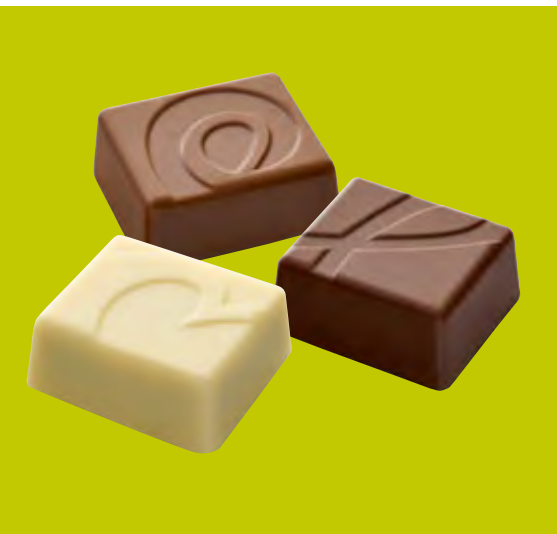


Dimensions: 140mm x 200mm x 70mm
Pcs/carton: 12
Carton/pal.: 40
Shelf life: 8 months
Article No.: 9678 Sour cherry
9676 Plum



STÜHMER WHITE CHOCOLATE WITH PISTACHIO CREAM FILLING

100 G



STÜHMER MOMENT DESSERT SELECTION IN 5 FLAVOURS

100 G

- Milk chocolate with salted caramel cream filling
- Dark chocolate with chocolate cream filling
- Caramelized white chocolate with almond brittle nougat filling
- Milk and white chocolate with apple caramel cream filling
- Milk chocolate with milk cream filling

Dimensions: 140mm x 200mm x 70mm
Pcs/carton: 12
Carton/pal: 60
Shelf life: 10 months
Article No.: 9841 5 flavours
9843 Pistachio



STÜHMER MOMENT KORFU

100 G

Dark chocolate filled with
egg white-honey frappé



TASTE THE SPACE
CHOCOLATE!



Dimensions: 140mm x 200mm x 70mm
Pcs/carton: 12
Carton/pal.: 60
Shelf life: 10 months
Article No.: 9902

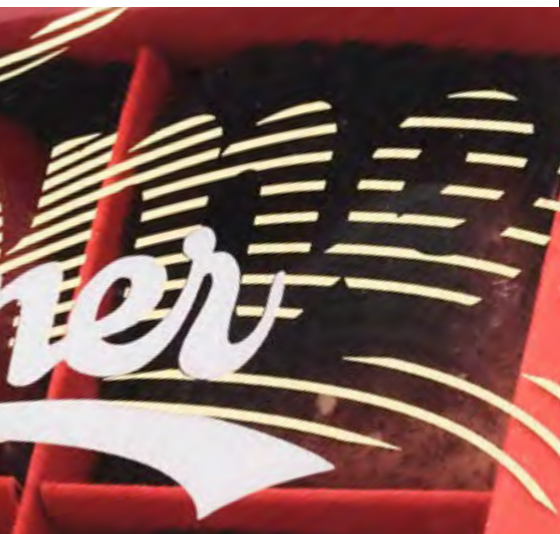
STÜHMER MOMENT KORFU

400 G



Dimensions: 127mm x 83mm x 150mm
Pcs/carton: 9
Carton/pal.: 36
Shelf life: 10 months
Article No.: 9901

Dimensions: 1280mm x 90mm x 28mm
Pcs/carton: 18
Carton/pal.: 80
Shelf life: 8 months
Article No.: 9750



STÜHMER HEART PRALINES SELECTION

85G

- Chocolate cream
- Strawberry
- Salted caramel
- Pistachio
- Raspberry-chili
- Hazelnut cream





STÜHMER MOMENT DESSERT SELECTION IN 5 FLAVOURS „HEART”

100 G

Dimensions: 194mm x 169mm x 24mm
Pcs/carton: 12
Carton/pal.: 80
Shelf life: 10
Article No.: 9837



STÜHMER MOMENT DESSERT SELECTION IN 5 FLAVOURS

60 G

- Caramelized white chocolate with almond brittle nougat filling
- Milk chocolate with milk cream filling
- Milk and white chocolate with apple caramel cream filling
- Milk chocolate with salted caramel cream filling
- Dark chocolate with chocolate cream filling

Dimensions: 42mm x 250mm x 23mm
Pcs/carton: 25
Carton/pal.: 75
Shelf life: 10 months
Article No.: 9835



- Milk chocolate with salted caramel cream filling
- Dark chocolate with chocolate cream filling
- Caramelized white chocolate with almond brittle nougat filling
- White chocolate with pistachio cream filling



**STÜHMER
MOMENT
DESSERT
SELECTION
„FROM HEART”
160 G**



Dimensions: 185mm x 185mm x 25mm
Pcs/carton: 12
Carton/pal.: 60
Shelf life: 10 months
Article No.: 9831





**STÜHMER
MOMENT
DESSERT
SELECTION
IN 6 FLAVOURS
„FLOWERS”
240 G**



Dimensions: 180mm x 285mm x 25mm
Pcs/carton: 12
Carton/pal.: 40
Shelf life: 10 months
Article No.: 9833



- Milk chocolate with salted caramel cream filling
- Dark chocolate with chocolate cream filling
- Caramelized white chocolate with almond brittle nougat filling
- Milk and white chocolate with apple caramel cream filling
- Milk chocolate with milk cream filling
- White chocolate with pistachio cream filling



STÜHMER MOMENT PARTY BOX PISTACHIO

500 G

White chocolate with pistachio
cream filling

STÜHMER MOMENT PARTY BOX DESSERT SELECTION IN 5 FLAVOURS

500 G

- Milk chocolate with salted
caramel cream filling
- Dark chocolate with chocolate
cream filling
- Caramelized white chocolate with
almond brittle nougat filling
- Milk and white chocolate with
apple caramel cream filling
- Milk chocolate with milk
cream filling



Dimensions:	127mm x 83mm x 150mm
Pcs/carton:	9
Carton/pal.:	36
Shelf life:	10 months
Article No.:	9827 5 flavours
	9828 Pistachio





STÜHMER MOMENT MONO SORT BULK

4000 G

- Milk chocolate with salted caramel cream filling
- Dark chocolate with chocolate cream filling
- Caramelized white chocolate with almond brittle nougat filling
- Milk and white chocolate with apple caramel cream filling
- Milk chocolate with milk cream filling
- White chocolate with pistachio cream filling

Dimensions: 267mm x 209mm x 243mm
Pcs/carton: 1
Carton/pal: 84
Shelf life: 10 months
Article No.: 9938



STÜHMER PRALINE SELECTION

66 G

Hazelnut and milk chocolate
cream



A WIDE SELECTION OF
GRAPHICS FOR EVERY
OCCASION



Dimensions:	100mm x 100mm x 30mm
Pcs/carton:	24
Carton/pal.:	100
Shelf life:	9 months
Article No.:	9704 Cream
	9704 Birds
	9704 Girls
	9704 Bear
	9704 Hydrangea
	9704 Happy Birthday

CHERRY MARZIPAN

80 G

Almond marzipan with sour cherries and dried cherries, covered with dark chocolate



Pcs/carton: 24
Carton/pal: 100
Shelf life: 8 months
Article No.: 9710
Dimensions: 100mm x 100mm x 30mm

STÜHMER THANK YOU DESSERT

130 G



- Caramelized white chocolate filled with almond croquant nougat
- White chocolate filled with coffee cream
- Milk chocolate filled with salted caramel cream
- Dark chocolate filled with chocolate cream



Dimensions: 220mm x 180mm x 25mm
Pcs/carton: 12
Carton/pal.: 80
Shelf life: 9 months
Article No.: 9735



STÜHMER YOUR CITY DESSERT SELECTION

130 G



- Caramelized white chocolate filled with almond croquant nougat
- White chocolate filled with coffee cream
- Milk chocolate filled with salted caramel cream
- Dark chocolate filled with chocolate cream





THE FILLING WAS
MADE FROM FRUITS



FRUIT PRALINE SELECTION

156 G

Strawberry, blackcurrant, sour
cherry and raspberry jelly covered
with marzipan, white and dark
chocolate



Dimensions: 105mm x 183mm x 60mm
Pcs/carton: 12
Carton/pal: 80
Shelf life: 10 months
Article No.: 9568





MARZIPAN SELECTION

170 G

- Marzipan with sour cherry cream, covered with dark- and milk chocolate
- Marzipan with caramel cream, covered with milk chocolate
- Marzipan with pistachio cream, covered with white chocolate
- Hazelnut-almond brittle with orange cream, covered with dark- and milk chocolate

Dimensions: 105mm x 183mm x 60mm
Pcs/carton: 12
Carton/pal.: 80
Shelf life: 8 months
Article No.: 9568





STÜHMER ORANGE BLOSSOM 200 G

Candied orange with chocolate
cream



Dimensions: 105mm x 183mm x 60mm
Pcs/carton: 12
Carton/pal: 80
Shelf life: 9 months
Article No.: 9065





STÜHMER "SZILVÁSBETYÁR"

220 G

Dried plum with red wine cream
and dark chocolate cover

Dimensions: 178mm x 75mm x 60mm
Pcs/carton: 20
Carton/pal.: 36
Shelf life: 9 months
Article No.: 9623



STÜHMER FACTORY AND WAREHOUSE





CERTIFICATE

Certificate No.: 161670-2014-AIFS-BUD-ACCREDIA	Certificate Issue date: 23.09.2025	Next Recertification audit to be performed within the time period between: 07.06.2026 and 16.08.2026 (announced audit)
Audit date: 05.08.2025	Certificate Expiry Date: 26.09.2026	12.04.2026 and 16.08.2026 (unannounced audit)
	Date and place: 24.09.2025, Vimercate	

Herewith the certification body DNV Business Assurance Italy S.r.l. being an ISO/IEC 17065 accredited certification body for IFS Certification and having signed an agreement with IFS Management GmbH, confirms that the processing activities of

Stühmer Kft

Stühmer Frigyes u 1., 3397 Maklár, Hungary

COID: 45260 - GS1 GLN(s): 5990503820005

Legal authorisation number: 09 1 154

for the audit scope:

Production (dosing, heat treatment, mixing, stretching, cutting, molding, coating or filling) and packaging in BOPP foil pouches, metalized foil, paper-coated aluminum foil, plastic blisters with paper pads, aluminum foil and paper of molded and coated chocolate (unstuffed, filled, solid, hollow, stratified) and marzipan products.

additional information:

Besides own production, the company has partly outsourced processes

The company has own broker activities which are not certified, according to IFS or another GFSI recognised standard.

Product scopes: 6 Grain products, cereals, industrial bakery and pastry, confectionary, snacks

Technology scopes: D, E, F

meet the requirements set out in the

IFS Food Version 8, April 2023

and other associated normative documents

Passed at Higher Level with a score of 97.83 %

Date of the last unannounced audit (last day of the audit): 17.05.2023

For the Certification Body: Sabrina Bianchini:

Address of the Certification Body: DNV Business Assurance Italy S.r.l., Via Energy Park, 14, 20871 Vimercate (MB), Italy

Lack of fulfillment of conditions as set out in the Certification Agreement may render this Certificate invalid.

Any changes in the product shall immediately be reported to DNV Business Assurance Italy S.r.l. in order to verify whether this certificate remains valid.



**Stühmer Caramelised White
Chocolate Bar 90g**

**Stühmer Mango Fantasy
Chocolate Bar 90g**



gff.co.uk | greattasteawards.co.uk | @greattasteawards #greattasteawards #ISpyGreatTaste



TAMÁS TÖRÖK

Head of Export

M: +36 70 559 35 15

E: tamas.torok@stuhmer.hu

A: Stühmer Kft., H-1134 Budapest, Átrium Park,
Váci út 45., „C” épület, 7. emelet

Factory: H-3397, Maklár, Stühmer Frigyes u.1

W: www.stuhmer.hu/en

